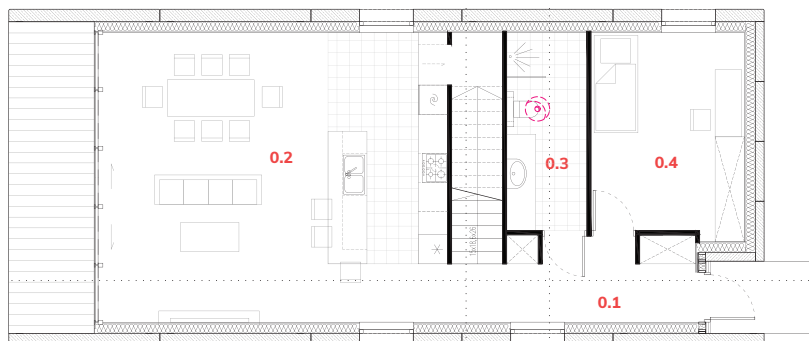


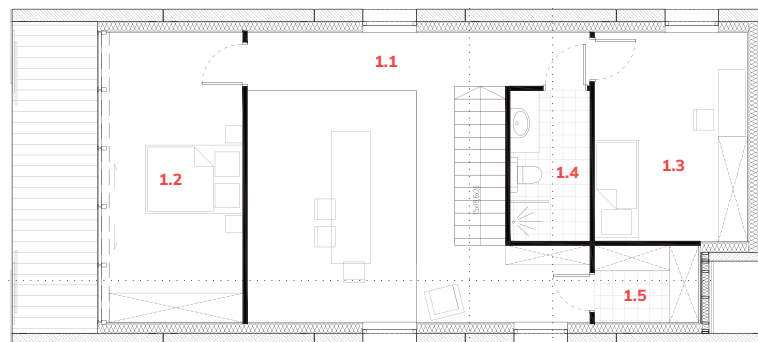
# SPINE **FUTURE**

dom o powierzchni  
użytkowej **124,81 m<sup>2</sup>**



## Parter 70,11 m<sup>2</sup>

0.1	Korytarz	8,28 m <sup>2</sup>
0.2	Salon z aneksem kuchennym	42,09 m <sup>2</sup>
0.3	Łazienka	6,72 m <sup>2</sup>
0.4	Pokój	13,02 m <sup>2</sup>



## Piętro 54,7 m<sup>2</sup>

1.1	Antresola	16,32 m <sup>2</sup>
1.2	Sypialnia	16,36 m <sup>2</sup>
1.3	Pokój	13,51 m <sup>2</sup>
1.4	Łazienka	5,11 m <sup>2</sup>
1.5	Pom. techniczne	3,4 m <sup>2</sup>